

Floor Lamp

INSTRUCTION MANUAL

Please read these instructions carefully before using your new light and retain for reference.
For Indoor use only

This pack contains:

1 x Floor Lamp Light, with switched lampholder, no shade.

Safety Warnings

Do not plug into the mains until your lamp is fully assembled. Under no circumstances must this floor lamp be covered with any material as this could pose a safety hazard.

This product is not suitable for persons under 14 years of age.

This product is only suitable for connection to 240V~50Hz supply, indoor use only and is *not* suitable for a Bathroom location.

The Floor Lamp must be protected by a 3 amp fuse in the mains plug.

This is a Class II  fitting.

If the mains plug requires replacing use a plug approved to BS1363 and wire it up according to the diagram below.

This product is supplied without a shade but before use a suitable shade must be fitted. This should not be of a size / shape that will impair the stability of the fully assembled product.

If any modification is made it will invalidate the warranty and may render the product unsafe.

If the mains cable becomes damaged it must only be replaced by a technically competent, qualified person.

Assembly/User Instructions

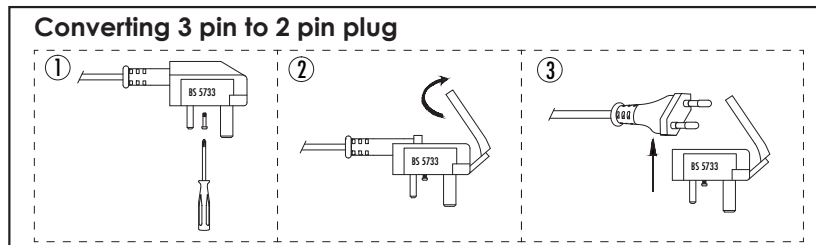
- Carefully unpack your Floor Lamp.
- Lay the components to be assembled on a soft clean surface.
Assemble as detailed below (see diagram).
 - Screw the tube **B** into head section **A**.
 - Screw the tube **C** into tube **B**.
 - Screw tube **C** onto base **D**.
 - Pull excess cable through base, untwist as much as possible.
- Secure the shade (not supplied) with the shade ring.
- Install the Bulb. Do not install a bulb with a greater wattage or different shape than specified on the label.
- Plug in and operate the lamp holder switch to turn your Floor Lamp on.

If your Floor Lamp will not illuminate, please check the bulb, the 3 amp fuse in the plug and ultimately check the relevant fuse in your Fuse Box.

If unsuccessful please consult your Retailer.

Switch off, remove plug and allow 10 minutes to cool before replacing bulb(s) or cleaning using only a dry cloth.

To use this item in Europe, the 3 pin adaptor can be removed by loosening the central screw and removing the adaptor to reveal the 2 pin Europe plug.



- EN Scan QR code for multi-language
- FR Scannez le code QR pour plusieurs langues
- ES Escanee el código QR para varios idiomas
- PL Zeskanuj kod QR dla wielu języków
- DE Scannen Sie den QR-Code nach mehreren Sprachen
- IT Scansiona il codice QR per multilingua

